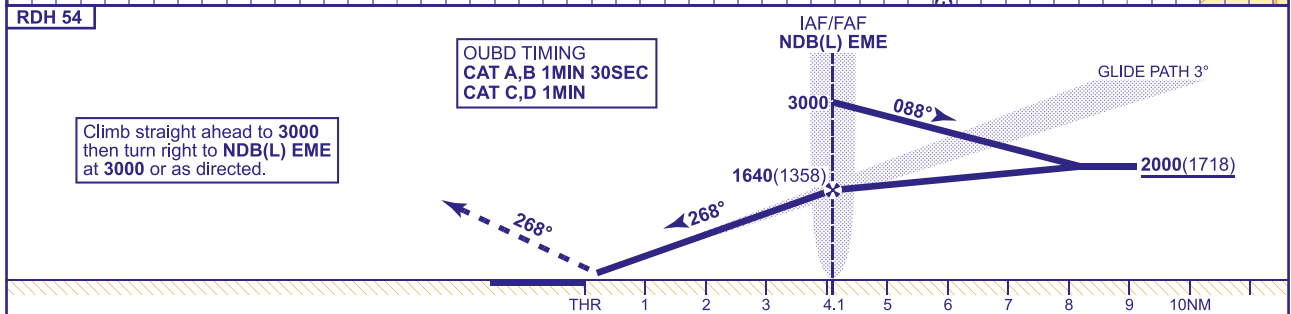


EAST MIDLANDS
ILS/NDB(L) Y
RWY 27
(ACFT CAT A,B,C,D)



ALTERNATIVE PROCEDURE
 Notify ATC. Fly outbound leg of baseturn on NDB(L) EME QDR 109° for 1MIN 45SEC (CAT A,B), NDB(L) EME QDR 126° for 1MIN 15SEC (CAT C,D) descending to not below **2000(1718)**, then turn left to establish on the LOC. MAX 210KIAS.